

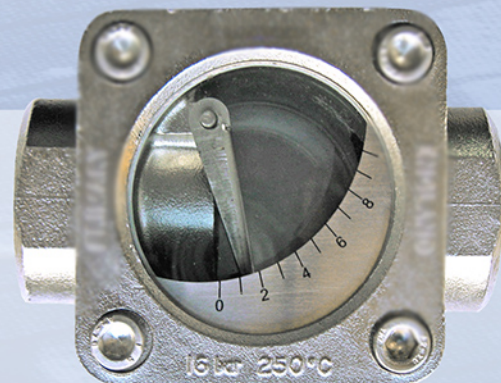
Flap Flow indicator

Technical Datasheet

This Flap flow indicator is ideal for you to visually check the flow, presence, colour and condition of a liquid

This style is particularly suited to full bore flows, giving an indication of flow rate against a unit scale. Suitable for horizontal or vertically upward flow. Ideal as a plant safety device where it is required to maintain a constant flow, such as lubricating or cooling systems.

For ease maintenance the glasses can be individually removed and replaced. For dirty or coloured liquids one window can be replaced with a steel cover and external pointer. For high flow rates and vertical lines the flap can be spring loaded. This option will give three times the normal flow range.

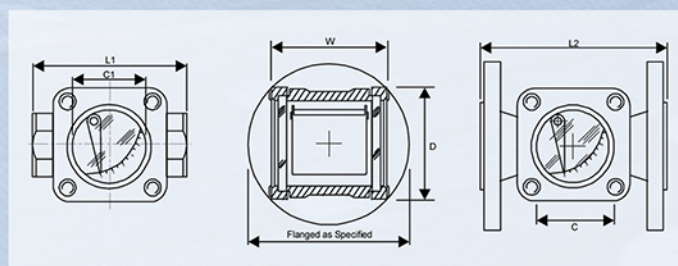


Features

Pressure:	up to 60 bar
Temperature:	up to 250°C
Sizes:	15 to 150mm
Materials:	Carbon steel or stainless steel
Connections:	BSP, NPT, ANSI150, ANSI300, PN16
CE marked and fully PED compliant	

Dimensions

Nominal Bore	Length L1	Length L2	Width W	Depth D	Clear-view C
15/20mm	85	130	63	60	42
25mm	95	140	72	66	48
40mm	120	180	102	84	62
50mm	150	220	118	106	77
80mm	N/A	260	160	170	100
100mm	N/A	260	196	170	100
150mm	N/A	360	304	220	150



Specifications are subject to change without notice.
Product images are for illustrative purposes only.